



## WAIKIKI CIRCLE HOTEL

2464 Kalakaua Avenue, Honolulu, HI 96815  
Direct: 808.923.1571 | Toll-free: 855.945.4088 | Fax: 808.926.8024  
[aquaaston.com/hotels/aston-waikiki-circle-hotel](http://aquaaston.com/hotels/aston-waikiki-circle-hotel)

Sabre AH: 37159 | Worldspan AH: HNLCR  
Galileo AH: 40780 | Amadeus AH: HNL850

### 2025 HOTEL FACT SHEET



#### Affordable accommodations in an ideal location

#### sweeping ocean views and whimsical atmosphere

Aston Waikiki Circle Hotel's playful ambiance, oceanfront location, and affordability make it a gem in Waikiki. Updated guest rooms each feature stylish plantation shutters, two double beds, a private balcony to take in the views, and WiFi internet access to keep you connected.

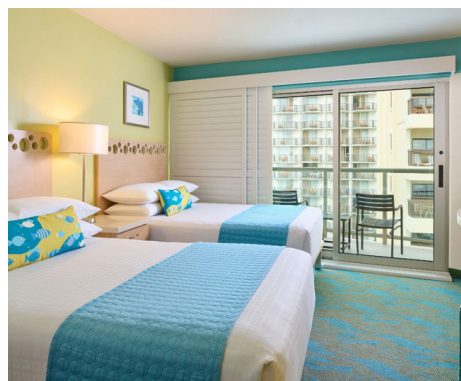
Conveniently located across from Waikiki Beach, the hotel offers easy access to world-class shopping, dining, activities, and Waikiki's exciting nightlife. Stay just steps from every beach and water activity you can imagine. Surfing to snorkeling, parasailing to sunset cruises, and everything in-between.



#### Waikiki's best value

With affordable rates and a prime location directly across from world-famous Waikiki Beach, Aston Waikiki Circle Hotel is one of Waikiki's prized value hotels. This landmark hotel, built to resemble a Chinese lantern, features a distinctive circular shape and a whimsical ocean theme.

When venturing out of Waikiki, enjoy the hotel's close proximity to concert venues, museums, hiking trails, golf courses, and more of Oahu's must-see attractions. Your next adventure is just around the corner.



104 rooms, 2 elevators, 14 floors

#### daily amenity fee includes

- CastNow streaming service
- Chilled water in lobby
- Daily local newspaper (in lobby)
- DVD movie rentals
- In-room coffee and tea packets replenished daily

- In-room safe
- Local and toll-free calls
- Shell lei greeting upon arrival
- Use of beach towels
- WiFi access throughout the property

- Bishop Museum admission (1 adult and children under 17)
- Honolulu Museum of Art admission (1 adult and children under 18)

#### guest room features

- Air conditioning
- Alarm clock radio
- Bathroom amenities
- DVD player
- Desk
- Electric kettle (on request)

- Flatscreen TV
- Hair dryer
- In-room safe
- Iron/board
- Keurig coffee maker
- Mini-refrigerator

- Non-smoking
- Plantation shutters
- Private balcony
- Shower only
- WiFi

#### services & amenities

- Baggage storage
- Beach toys for children
- Crib available on request
- Daily housekeeping
- Front desk - 24 hours
- Ice machines
- Laundry/dry cleaning service (\$)

- Lending library
- Parking - self; limited (\$)
- Restaurant (on-site)
- Surfboard storage
- Wheelchair accessible
- Check-in: 3 p.m.
- Check-out: 12 p.m.

#### restaurant

- Eggs 'n Things Waikiki Beach Eggspress

#### points of interest

- Waikiki Beach - across the street
- International Market Place - 0.2 miles
- Royal Hawaiian Center - 0.4 miles

- Waikiki Aquarium - 0.6 miles
- Honolulu Zoo - 5 blocks
- Kapiolani Park - 5 blocks

- Ala Moana Center - 2 miles
- Diamond Head - 2 miles
- Hawaii Convention Center - 2.2 miles

GUEST ROOM CATEGORIES	UNIT SIZE	BED TYPE	GUESTS/UNIT	#UNITS
Hotel Room Standard	245 sq ft	2D	1-2 (max pax 4)	16
Hotel Room Standard - Accessible	245 sq ft	1Q	1-2 (max pax 4)	1
Partial Ocean View	245 sq ft	2D	1-2 (max pax 4)	26
Partial Ocean View - Accessible w/Roll-in Shower	245 sq ft	1Q	1-2 (max pax 4)	1
Ocean View	245 sq ft	2D	1-2 (max pax 4)	26
Ocean View - Accessible	245 sq ft	1Q	1-2 (max pax 4)	2
Oceanfront	245 sq ft	2D	1-2 (max pax 4)	18
Oceanfront - Accessible	245 sq ft	1Q	1-2 (max pax 4)	1
Oceanfront Deluxe	245 sq ft	2D	1-2 (max pax 4)	18
Oceanfront Deluxe - Accessible	245 sq ft	1Q	1-2 (max pax 4)	2

(D) Double (Q) Queen

Note: Information listed subject to change without notice. Visa, MasterCard, American Express, Discover, JCB accepted.